

St. Mary's School, Dwarka
Practice Worksheet (April-May)
Class: II
Subject: Language Practice

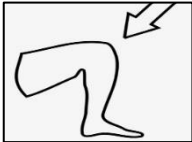

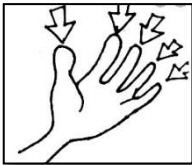
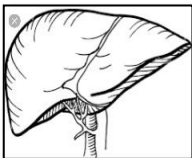
Topic: L – 1, My Body

Name: _____ Sec: _____ Date: _____ Roll No: _____

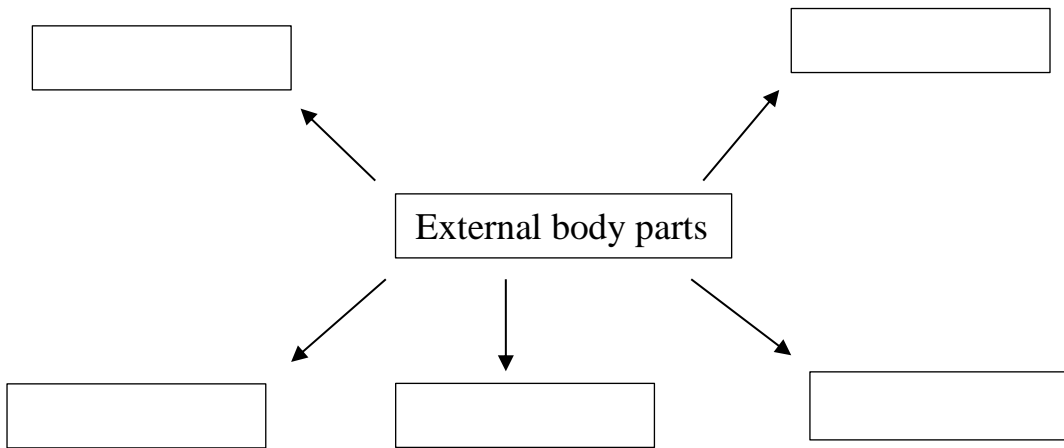
1. Fill in the blanks using the correct option.

- a) _____ tells us that the ice cream is sweet.
- i) Eyes ii) Ears iii) Tongue
- b) The _____ controls our body.
- i) liver ii) brain iii) stomach
- c) We _____ with the help of our legs.
- i) walk ii) talk iii) eat
- d) _____ is an internal organ.
- i) Liver ii) Hair iii) Eyes
- e) We should eat _____ every day.
- i) chocolate ii) fruits iii) ice cream

2. Match the following with the correct body part.

- a)  liver _____
- b)  knee _____
- c)  elbow _____
- d)  fingers _____

3. Complete the given G.O.



4. Unscramble the words and write the correct answer.

- a)  a h s n d _____
- b)  s e r s h u o l d _____
- c)  o t s h c a m _____

5. Write T for True and F for False for the following statements.

- a) Our eyes help us to smell. _____
- b) We should take a bath everyday. _____
- c) We catch a ball with our hands. _____
- d) The organs we can see with our eyes are called internal organs. _____
- e) The lungs help us to breathe. _____