

St. Mary's School, Dwarka
Holiday Homework
Class IX
Week 4
Worksheet 4

Subject: English

Q1. Read the following passage.

The musical accomplishments of composer Ludwig van Beethoven have been all the more remarkable for the fact that he lost his hearing ability from an early age. He developed the symptoms of tinnitus, a constant sound of ringing in his ears that made it difficult for him to hear. He is compared to Mozart for his genius, and is considered the most eminent musician after Mozart.

Although his formal education never went beyond the elementary level, he trained in music under Joseph Haydn. He has always been acclaimed as a brilliant piano maestro. His father and grandfather were the court musicians of a German prince. Young Ludwig was often made to perform for his father's drinking companions in the middle of the night, and was even beaten if he protested.

For the first thirty years of his life, Beethoven could listen to and play music effortlessly. As a result, he understood sounds of musical instruments and the pitch of the singing voices. He knew the harmony between music and singing before he became completely deaf. His deafness was not sudden, but a gradual decline. This slow process of losing his hearing activated his mind to imagine how his compositions would sound like. When he became completely deaf, he started to observe the vibrations of the piano. The observations helped him realize that he could not hear the high notes of the piano. To be able to hear his own compositions, he sawed off the legs of his piano. The piano touched the floor, and Beethoven would press his ear to the floor, banging the piano keys to listen to the high notes in his compositions.

The most significant aspect of Beethoven's character was that he did not give up. With a brave heart, he confronted the greatest challenge a musician can face, and continued living his dream of composing music. Deafness could not deter him from achieving the pinnacle of musical success. He fought against the greatest obstacle and won. His quality of 'never giving up' strengthened him. It made him come to terms with his deafness in a dynamic and constructive way. These qualities led him to become a famous composer.

On the basis of your reading of the above passage, answer the questions that follow: (1/2 x5=2.5)

(i) What did Beethoven lose at an early age?

- a) his eyesight
- b) his thinking ability
- c) his hearing ability
- d) his power to understand

(ii) Till which level did Beethoven receive his formal education?

- a) Elementary level
- b) Secondary level
- c) Primary level
- d) Higher Secondary level

(iii) What activated his mind to imagine his various compositions?

- a) the slow process of losing his hearing
- b) the process of becoming popular
- c) inspiration from his father
- d) ability to listen and play music effortlessly

(iv) When was he able to observe the vibrations of the piano?

- a) began to learn music better
- b) became completely deaf
- c) was able to hear his own compositions
- d) he was unable to play music

(v) Find a word in the passage which means the same as ‘publicly praised and celebrated’.

- a) accomplishments
- b) acclaimed
- c) remarkable
- d) significant

Q2. You are Mohit/Mohini Verma, the Cultural Captain of Ramjas School, Meerabagh. The school is organizing a programme ‘Spic Macay’ in collaboration with ‘The Hindustan Times’ to promote love for classical music and dance among the children. Some very famous Indian classical artists are coming to perform at the event. Draft a notice inviting the students of classes VI-XII to watch the programme. Include necessary details like date, time, venue etc. Put the notice in a box. (2)

Q3. The invention of mobile phone has brought about a revolution in the lives of the people in the country. If used properly it can be a blessing but if misused it can prove to be a curse. Write an article in 100-120 words on ‘Mobile phone – A Boon or Bane’. (3)

Q4. *Trees* are an integral part of the ecosystem. They help to maintain balance and also act as a valuable source for many other resources. It is sad that they being mercilessly cut to cater to our needs. It is indeed a matter of great concern. Design a poster along with a slogan to ‘Save Trees’. (3)

Q5. Fill in the blanks with the correct form of the word given in the bracket: (3)

Priyam(a)_____ (go) to the Taj Holiday Village in Cochin with her parents for a holiday. She got a call from her grandmother(b)_____ (ask) her what were they doing there. Priyam told her grandmother that her father and brother(c) _____ (swim) in the pool. She also told her grandmother

what(d)_____ (do) she do the day before. She said that she(e) _____(go) to the beach where she(f) _____(see) vendors selling food items and pearls to the tourist.

Q6.Fill in the blanks with suitable words.

(3)

Napolean returned to France (a) _____his conquests were over. He was given a huge welcome (b)_____he returned. In the crowd, he noticed an old lady. He immediately recalled that she was his nurse (c)_____ he was a child. (d)_____he was a great king now, he did not hesitate to meet her. He welcomed her with great affection (e) _____told the crowd that she was his second mother. He invited her to live in his palace. Every day he would wait for her at the dinner table and would never start eating (f)_____she joined him. He treated her with great love and care. This old woman was Camilla Larry.

Q7. Choose the correct option for the following statements.

(1.5)

(i) Jack said, “Can I go and dance father?”

- a) Jack asked his father if he can go and dance.
- b) Jack sought permission to dance.
- c) Jack asked his father whether he went and danced.
- d) Jack asked his father if he could go and dance.

(ii) Pihu said to Anu, “Please come and support me”

- a) Pihu asked Anu to come here and support her.
- b) Pihu requested Anu to come here and support her.
- c) Pihu requested Anu to come there and support her.
- d) Pihu requested Anu to go there and support her.

(iii) Saif said to me, “Who can decode such a difficult message?”

- (a) Saif asked me by whom can such a difficult message be decoded.
- (b)Saif asked me who could decode such a difficult message.
- (c)Saif asked me who can decode such a difficult message.
- (d)Saif said to me by whom can such a difficult message be decoded.

Q8. Complete the following passage by choosing the correct option.

(2)

Ashoka was one of greatest emperors of India. He is known as “Ashoka, the Great”. He ruled from Patliputra ascapital city ofempire. Ashoka waged many battles..... his enemies. One of the best-known invasions was Kalinga.

- (i) (a) a (b) the (c) an (d) some
- (ii) (a) a (b) the (c) an (d) his
- (iii) (a) a (b)the (c) his (d) an
- (iv) (a) with (b) against (c) for (d) along with

Q9. Imagine you are Margie from the lesson ‘The Fun They Had’. You read the real book Tommy found in the attic. Write a diary entry expressing your feelings about how charmed you are by the old school system. (2.5)

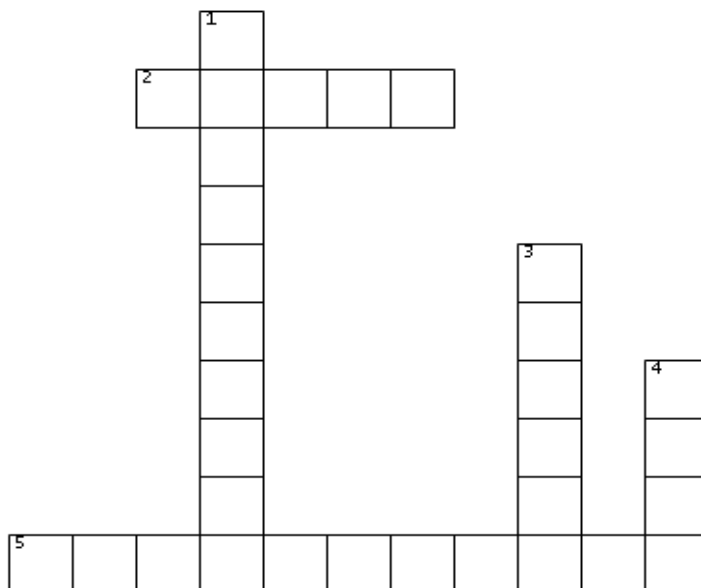
Q10. Solve this interesting puzzle based on the poem ‘The Road Not Taken’ using the clues given. (2.5)

ACROSS

2. The poet kept this road for some other day.
5. The roads bent under it.

DOWN

1. The poet's choice early in life has made all the..... .
3. The colour of the leaves in autumn.
4. The poet will be telling his story with a..... .



प्रश्न 1 निम्नलिखित गद्यांश को पढ़कर प्रश्नों के उत्तर दीजिए —

बुद्ध अपने जीवन के अंत तक अधिक से अधिक लोगों से मिलकर धर्मसूत्रों की व्याख्या करना चाहते थे। अब वे कुशीनारा की ओर बढ़ रहे थे। जहाँ भी वे विश्राम के लिए रुकते वहाँ भीड़ लग जाती। वे सब बुद्ध के उपदेश सुनना चाहते थे। एक दिन घूमते-घूमते सुभद्र नाम का एक साधु उधर रहने वाले मल्ल जाति के लोगों के साथ वहाँ आया। सब बुद्ध से मिलने को उत्सुक थे। बुद्ध विश्राम कर रहे थे अतः आनंद ने उन्हें लौट जाने को कहा। आनंद ने आँखों में आँसू भरकर बताया कि तथागत का अंत समीप है। साधु सुभद्र बुद्ध से मिलकर अपने कुछ प्रश्नों का समाधान करना चाहता था। आनंद को क्रोध आ गया वे दोनों आपस में तर्क-वितर्क करने लगे। उनके ऊँचे स्वर बुद्ध के कानों में पड़े तो उन्होंने आनंद से सुभद्र को अंदर लाने को कहा। सुभद्र बुद्ध के स्वास्थ्य से विरक्त प्रश्न पूछता रहा। बुद्ध ने सबका समाधान किया। अंत में सुभद्र भी उनका शिष्य बन गया। वह संघ में दीक्षित होने वाला अंतिम व्यक्ति था। शय्या पर लेटे - लेटे अपनी क्षीण आवाज़ में अधमूँदी आँखों से बुद्ध अपने शिष्यों से पूछते रहे कि उनके कोई प्रश्न हों तो वे उनका उत्तर देंगे। उनके तीन बार कहने पर भी किसी ने कुछ न पूछा। तब बुद्ध ने क्षीण स्वर में कहा “मैं निर्वाण के मार्ग पर जा रहा हूँ अपकर्ष और क्षय शरीर का धर्म है सब नश्वर है जो बना है वह अवश्य नष्ट होगा। सत्य सर्वदा रहेगा। करुणा करो और सबको सुखी बनाओ। अपनी मुक्ति के लिए कर्मठता से कार्य करो।” इसी के साथ तथागत ने शांति से आँखें मूँद लीं।

(क) जीवन भर बुद्ध किस कार्य में लगे रहे ? (1)

(ख) सुभद्र तथागत से क्यों मिलना चाहता था ? (1)

(ग) बुद्ध ने अपने संदेश के माध्यम से लोगों को क्या शिक्षा दी है ? (1)

(घ) ‘समाधान’ और ‘क्षीण’ शब्दों के अर्थ लिखिए। (1)

(ङ) ‘अंत’ शब्द का विलोम शब्द लिखिए। (1)

प्रश्न 2 निम्न शब्दों का वर्ण - विच्छेद कीजिए — (2)

(i) धृतराष्ट्र (ii) उपर्युक्त (iii) आक्रमण (iv) श्रृंगार

प्रश्न 3 उचित स्थान पर अनुस्वार चिह्न लगाइए — (2)

(i) सुदर (ii) कथा (iii) चचल (iv) निमत्रण

प्रश्न 4 उचित स्थान पर अनुनासिक चिह्न लगाइए — (2)

(i) आगन (ii) काटा (iii) फूकना (iv) पाव

प्रश्न 5 ‘दुःख का अधिकार’ पाठ के आधार पर लिखिए कि बुढ़िया के दुःख को देखकर, लेखक को अपने पड़ोस की संभ्रात महिला की याद क्यों आई ? (2)

प्रश्न 6 भगवाना अपने परिवार का निर्वाह कैसे करता था ? (2)

प्रश्न 7 बुढ़िया अपने बेटे का इलाज करवाने के लिए किसी बुलाकर लाई ? (1)

प्रश्न 8 'मेरा जीवन लक्ष्य' विषय पर दिए गए संकेत बिंदुओं के आधार पर सुंदर अनुच्छेद लिखिए - (3)

1 भूमिका 2 जीवन लक्ष्य का महत्त्व 3 लक्ष्य चुनने के कारण 4 उपसंहार

प्रश्न 9 आप वीना/ प्रवीन हैं और आगरा में अपने चाचा-चाची के साथ रहते हैं। कविता प्रतियोगिता में प्रथम स्थान प्राप्त करने की खुशखबरी देते हुए अपने बड़े भाई को पत्र लिखिए। (3)

प्रश्न 10 मंदिरों के आस-पास फैली गंदगी को लेकर दो महिलाओं के बीच हुई बातचीत को 60 से 70 शब्दों में संवाद के रूप में लिखिए। (3)

Subject- Mathematics

No. of questions: 20

1. If Ramesh buys five apples at a cost of Rs.10 each and he sells all apples to Ganesh at a profit of 10%. Find the selling price of each apple. (1)

- A. 15
- B. 11
- C. 12
- D. 13

2. Find the volume of the rectangular box whose length (l) = mn, breadth (b) = m^2p , depth (d) = pmn^2 . (1)

- A. m^4n^2p
- B. $m^4n^3p^2$
- C. m^3n^2p
- D. $m^3n^2p^2$

3. If $p=2q+6$, then what is the value of $p^3 - 8q^3 - 36pq - 216$? (1)

4. Sum of the ages of Ganesh and Ramesh is 35. Ganesh is 5 years elder than Ramesh. Then find the ages of Ramesh and Ganesh? (1)

5. What values of (x, y) satisfy the given equation $x^3 - 2x^2y + 2xy^2 - y^3 = 0$ (1)

- A. (1, 1)
- B. (1, 2)
- C. (2, 1)
- D. (3, 1)

6. Simplify the expression, $(a^{22} \times a^{-12}) \times (b^{-10} \times b^{20})$ (2)

- A. $(ab)^{10}$
- B. $a^{22} \times b^{20}$
- C. $(ab)^{12}(ab)^{12}$
- D. $a^{12} \times b^{10}$

7. If square root of $25x$ is 16. what is the value of x ? (2)

- A. 4
- B. 2
- C. 5
- D. 6

8. Check whether 18252 is a perfect cube or not? If not, find the number which is to be multiplied to 18252 become a perfect cube. (2)

9. The difference between two natural numbers is 196 and the ratio of the two numbers is 9:5. Find the two natural numbers. (2)

10. Ramu invested an amount of Rs.8000 at an interest rate 10% per annum compounded for 3 years. Find the compound interest. (2)

11. (a) If $231325x$ is divisible by 9, then find the least value of x .
 (b) If $1051x85$ is divisible by 11, then find the least value of x . (2)
12. A toy is bought at Rs.4000 and marked to a price of Rs.5000. If the toy is sold for Rs.2250, then find the discount and discount percentage. (2)
13. If a box contains 4 Red balls, 5 Green balls, 6 Blue balls. Find the probability of
 (a) Getting a green ball
 (b) Getting a blue ball
 (c) Non-red ball (3)
14. Swapna bought two books for Rs.800 each. She sold one book at a loss of 10% and other at a profit of 15%. Find the selling price of each and also find the total profit or loss. (3)
15. If the smallest side of a trapezium is 10 m and distance between the two parallel sides of the trapezium is 20 m and also its area is 480 m^2 , then find the other side of the trapezium. (3)
16. If Pawan borrowed an amount of Rs.14,000 from Rahul with simple interest rate of 8% per annum for 2 years. What extra money should he pay if this sum is compounded with same interest rate and time period? (3)
17. Simplify $(x^2 + 2x + 3)(x^2 - 3)(x - 1)$ (3)
18. Solve the below expressions: (3)
- (a)

$$\frac{36x^2y(x - y)^2}{(x^2 - xy)}$$
- (b)

$$\frac{x^3 - y^3}{(x - y)^6}$$
19. Find the values of the following using identities (4)
- (a) $91^2 - 23^2$
 (b) 101×99
 (c) 999^2
20. In an ATM if the currency notes of denominations of Rs.500/-, Rs.100/- and Rs.50/- respectively, the notes are in the ratio of 3:3:4. The total cash in the ATM is Rs.400,000/- How many notes of each denomination that ATM contains? (4)

Subject: Science

Objective:

- Ø Revision of concepts
- Ø Application of the concepts to real life situations.
- Ø Skills to carry out research work and develop scientific aptitude

Instructions:

- *Neatly write all the answers in your science notebook.
- *Attempt the questions keeping in mind the weightage of each question.
- *Assignment 'Summer Holiday Homework' will be created on TEAMS a PDF of handwritten work should be uploaded on it.

Worksheet 4-Physics

Let's Recapitulate Motion & Time

Read the content given below and answer the following questions.

We see leaves falling from trees and water flowing from the river. We walk, we run, we drive a car these are the activities that we carry out in our day-to-day life. These activities can be defined as motion. Different objects move differently. Some objects move in a curved path, some in a straight path and a few others in a different way. According to the nature of the movement, motion is classified into three types as follows:

- Linear Motion
- Rotary Motion
- Oscillatory Motion

Motion is mainly described in terms of the following terms:

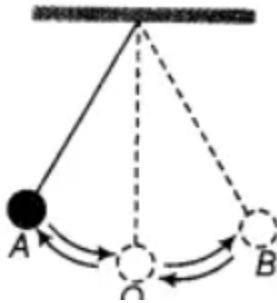
- Distance
- Speed
- Time

1. Define average speed of an object moving in a straight line. (1)

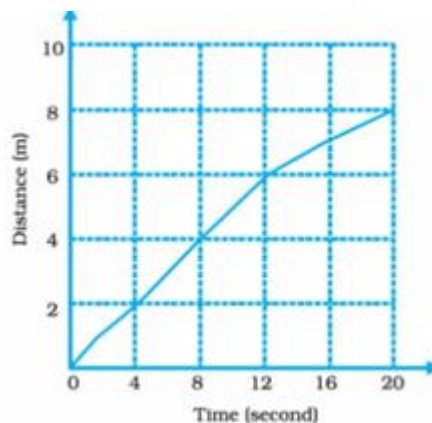
2. A space ship travels 36,000 km in one hour. Express its speed in m/s. (2)

3.a) Name the type of motion exhibited by a simple pendulum.

- b) A simple pendulum is oscillating between two points A and B as shown in figure. Is the motion of the bob uniform or non-uniform? Give reason. (2)



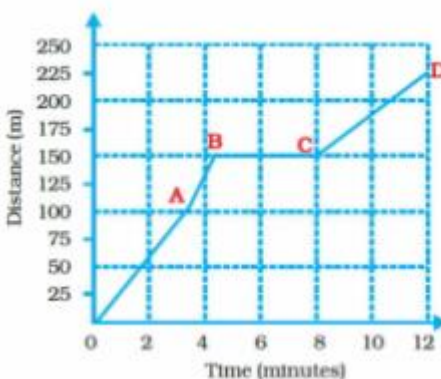
4. A train is travelling at a speed of 100 km/hr. How long will it take to complete a journey of 500 km without stopping in between. (2)
5. Salma takes 15 minutes from her house to reach her school on a bicycle. If the bicycle has a speed of 2 m/s, calculate the distance between her house and the school. (2)
6. Define time period of a simple pendulum. Calculate the time period of a simple pendulum if it takes 48 seconds to complete 12 oscillations. (3)
7. Assume you were riding a bicycle with your younger brother along a straight road. Your brother just studied about the types of motion and asked you to help him classify the various parts of the bicycle that exhibits the following types of motion (a) rectilinear motion (b) circular motion and (c) both rectilinear as well as circular motion.
- Classify the various parts of the bicycle and its type of motion for your brother. Support your answer with valid reason. (3)
8. Given below is the distance-time graph of the motion of an object. (3)



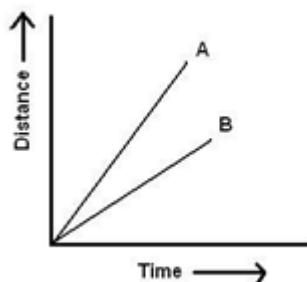
- What will be the position of the object at 20s ?
- What will be the distance travelled by the object in 12s?
- Calculate the average speed of the object.

9. Amit goes to the football ground to play football. The distance-time graph of his journey from his home to the ground is shown in the figure. (3)

- What does the graph point between B and C indicate about the motion of Amit?
- Is the motion described during the time interval 0-4 minutes uniform or non-uniform?
- What is the speed between 8-12 minutes of Amit's journey?



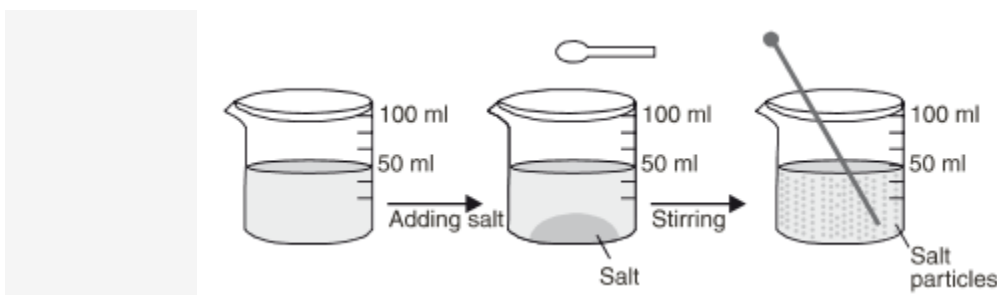
10.a) Look at the graph below of two vehicles A and B, which one of them is moving faster. (4)



b) The odometer of a car reads 57321.0 km when the clock shows the time 08:30 AM. What is the distance moved by the car, if at 08:50 AM, the odometer reading has changed to 57336.0 km? Calculate the speed of the car in km/min during this time. Express the speed in km/h also.

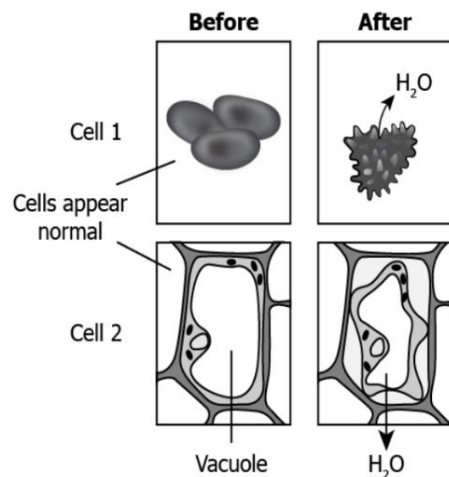
Worksheet 4- Chemistry

1. Can we consider vacuum as matter? (1)
2. What conclusion can we draw about intermixing of gases? (1)
3. Which two states of matter show the property of fluidity? (1)
4. When a small amount of sugar is added to water in a graduated cylinder, there is no detectable change in the level of water. Give reason. (2)
5. Why does a gas exert pressure? (2)
6. Define matter. Name the states of matter in which the forces between the constituents particles are (a) strongest (b) weakest. (3)
7. Carbon dioxide gas is heavier than oxygen and nitrogen. Why does it not form a lower layer in the atmosphere? (3)
8. Why does honey diffuse in water at a slower rate than ink? (4)
9. Explain that the characteristics of matter changes with the change of states? (4)
10. Observe the diagram carefully. Identify and explain the characteristics of matter that is being explained through the activity. (4)



Worksheet 4- Biology

1. Name the smallest cell and the longest cell in the human body. (1)
2. What will likely happen if an animal cell and a plant cell are placed in a sugar solution that has water concentration more than that of the animal cell and the plant cell? (2)
3. The image shows how the two cells appear before and after placing in a hypertonic solution. Based on the behaviour of the cell, identify the cell types. (2)



4. A person consumes a concentrated solution of salt, after sometime he starts vomiting. Explain the phenomenon responsible for such a situation. (2)

5. We eat food which includes the nutrients like carbohydrates, proteins, fats, vitamins, minerals and water. After digestion, these are absorbed in the form of glucose, amino acids, fatty acids, glycerol, etc. Explain the mechanism involved in the absorption of digested food and water. (3)

6. How do fungi and bacteria withstand extreme changes in the surrounding medium as compared to animal cells? (3)

7. Vasu was helping his mother in laying the table. He was about to sprinkle salt on salad for dressing. His mother stopped him from doing so and told him that it is too early to sprinkle salt on the salad, he should do so only when they were seated for having dinner. (3)

a) What would happen if salt is sprinkled on the salad earlier than it has to be consumed?

b) Explain the property of cells seen while adding salt to it.

8. Draw a neat and labelled diagram of a typical prokaryotic cell. (3)

9. In brief state what happens when (3)

a) dry apricots are left for some time in pure water and later transferred to sugar solution?

b) the plasma-membrane of a cell breaks down?

c) Rhoeo leaves are boiled in water first and then a drop of sugar syrup is put on it?

10. Rajni was told by his teacher that a cell is the structural and fundamental unit of life. She asked her teacher to give reasons to support her statement. She felt very happy when her teacher showed her the slide of onion peel with the help of a microscope. She was able to identify the various parts of the cells visible in the slide. (2+3=5)

a) Why is the cell called the structural and functional unit of life?

b) With the help of a suitable diagram show the cells observed in onion peel and label them.

Subject: Social Science

Worksheet 4- Political Science

Q1. The National Emblem is symbolic of contemporary India's affirmation of its ancient commitment to _____ and _____. 1



- a) Universal Brotherhood and integrity
- b) World Peace and goodwill
- c) Fraternity and Unity
- d) Liberty and Equality

Q2. What does the term 'Satyameva Jayate' on the state emblem mean? 1

- a) Truth will live on
- b) Only Truth Prevails
- c) Truth will Triumph
- d) Truth lives

Q3. Who designed Indian National Flag? 1

- a) Dr. B.R. Ambedkar
- b) Jawahar Lal Nehru
- c) Pingali Venkayya
- d) Dr. S. Radhakrishnan

Q4. Who can declare Emergency in the Country?

1

a) Prime Minister

b) Union Cabinet

c) Governor

d) President

Q5. What are 'Directive Principles of State Policy'?

1

Q6. Explain the term 'Republic'.

1

Q7. Based on the information given below, state whether it is 'democratic' or 'undemocratic'.

(1x3=3)

1. People who do not accept the country's official religion do not have the right to vote.

2. The same party has been winning elections for the last twenty years.

3. Ruling party has lost in the last three elections.

Q8. This cartoon was titled 'Building Democracy'. What do money bags signify here? Could this cartoon be applied to India?

3



Q9. 'People will understand the value of rights only if they are under the obligation to perform certain duties.' How many fundamental duties are mentioned in the Indian constitution? List any four fundamental duties.

3

Q10.

(3+1+1=5)



- i. Identify the above logo and list its two objectives.
- ii. When did this movement originate and where?
- iii. Why do you think India did not join any of the power blocs?

Worksheet 4-History

Q1. What does the word livres stand for?

1

- (a) Unit of currency in France
- (b) Tax levied by the state
- (c) Tax levied by the Church
- (d) Tax to the Landlord

Q2. Division of power within the government was put forth in

1

- (a) 'Two Treaties of Government'
- (b) 'The Spirit of the Laws'
- (c) 'Le Moniteur Universal'
- (d) 'The Social Contract'

Q3. The winged woman personified

1

- (a) National colours of France
- (b) Act of becoming free
- (c) Personification of Law
- (d) Rays of the Sun will drive away the clouds of ignorance

Q4. In the context of France the volunteers from Marseilles sang the Marseillaise, a patriotic song when they marched into Paris. Who composed this song?

1

- (a) Maximilian Robespierre

- (b) Marie Antoinette
- (c) Roget de L'Isle
- (d) Mirabeau
- Q5. What did the Red Cap worn by Sans Culottes in France symbolize? 1
- (a) Liberty
- (b) Brotherhood
- (c) Love
- (d) Equality
- Q6. Which of the following refers to the political body representing the three estates of pre-revolutionary France? 1
- (a) Parliament of France
- (b) National Assembly
- (c) Estates General
- (d) Estates Committee
- Q7. Which laws were introduced by revolutionary government to improve the condition of women in France? 3
- Q8. What landmark decisions were taken by the National Assembly led by the Third Estate on 4th August, 1789? 3
- Q9. Explain the role of philosophers in the French Revolution of 1789. 3
- Q10. Describe the social conditions in France before the French Revolution. 5

Worksheet 4- Economics

- Q1. What do you mean by working capital? 1
- Q2. Name the kharif and rabi crops grown in Palampur. 1
- Q3. Farmer's plough is an example of which factor of production? 1
- Q4. What are different types of production activities carried out in villages in India? 2
- Q5. Which is the main production activity in the village? Mention one important change in way farming is practiced? What is its side effect? 2
- Q6. What factors have led to the reduction of water level in Palampur? 2
- Q7. How was farming done till the mid-1960s? 2
- Q8. Farmers of which states were the first to try out the modern farming method in India? How did they do it? 2
- Q9. "Transport is a fast-developing sector in Palampur". Support the statement. 3

Q10. Why is it always the medium and large farmers who supply wheat and other farm products to the markets? 4

Worksheet 4- Geography

Q1. What are the main crops that are grown in the Equatorial regions? 1

Q2. Name the most continuous range of Himalayas consisting of the lofty peaks. 1

Q3. Tropical Grasslands are also known as the 1

1) Pampas

2) Velds

3) Downs

4) Savannas

Q4. India has which type of climate? 1

1) Equatorial climate

2) The British type of climate

3) Tropical Monsoon type of climate

4) Mediterranean climate

Q5. Cinchona, rosewood and rubber are the trees of common varieties found in which of the following forests? 1

1) Deciduous forests

2) Coniferous forests

3) Tropical Monsoon forests

4) Tropical rainforests

Q6. Which is the only large river of Indian Desert in Rajasthan? 1

Q7. Give reasons why Shiwalik ranges are prone to landslides and earthquakes. 3

Q8. Describe the Corals? Discuss the main features and give one example. 3

Q9. Click the link given below and answer the following questions in brief: 3

<https://youtu.be/9-vrLi5U9FM>

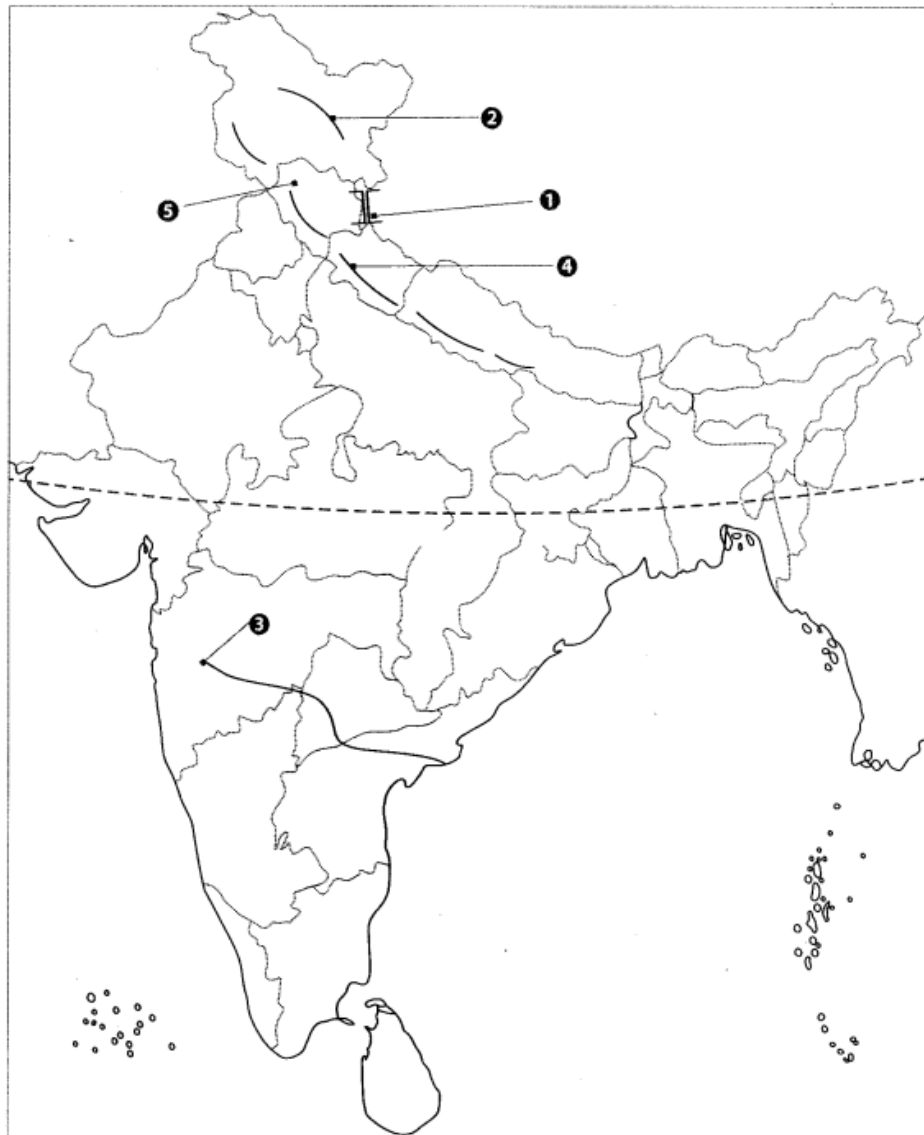
(i) What is a strait?

(ii) What is the name of the southernmost point of India? Why is it not visible today?

Q10. Features are marked by number in the political map of India. Identify these features with the help of the following information and write their Correct names on the lines marked in the map.

5

1. A mountain pass
2. A mountain range
3. A river known as Dakshin Ganga
4. The outermost range of Himalayas
5. World's highest gravity dam



Subject: Information Technology

Q1. Fill in the blanks:-

1*5=5

- a. The command allows you to cancel the last action performed.
- b. The distance between the written text and the edge of the paper is called
- c. A is an organised arrangement of text in the form of rows and columns.
- d. The distance between the text boundaries and the page margins is called
- e. A is a small graphic symbol that marks an item in a list.

Q2. Write the shortcut keys for the following: -

1*5=5

- a. To jump to a specific page number
- b. To open the find and replace dialog box
- c. To write a text in superscript
- d. To insert the table in the document

Q3. Answer the following question with respect to Libre Office Writer: -

2*5=10

- a. How is replace command different from replace all command?
- b. What does the red wavy lines and blue wavy lines indicate in a document?
- c. Why do we use a drop cap feature in a document? Name the tab where drop cap feature is present.
- d. What happens with the following functions when we insert a row or a column?
 - i) Row Above
 - ii) Row Below
 - iii) Column Before
 - iv) Column After
- e. Define clipboard. Name and recognize the following tools.

i)



ii)

