

St. Mary's School, Dwarka
Holiday Homework
Class - IX
Week 1
Worksheet-1

Subject – English

SECTION A – READING

Q.1 Read the following passage carefully.

The self-governing National Red Cross Societies, including the Red Crescent (in Muslim countries) and the Red Lion and the Sun (in Iran), operate on the national level through their volunteer members, although they also participate in international work. Each must be recognized by the International Committee. Today numbering 114, these societies have Junior Red Cross Societies as well. Virtually all have disaster relief programmes, and many carry on welfare programmes, with community health and safety instruction, and so on. Since World War II, many of the European and Asian societies have also established refugee services.

The League of Red Cross Societies, a coordinating world federation of these societies, was established in 1919 as the result of proposals made by Henry P. Davison (1867-1922) of the American Red Cross. The League maintains contacts between the societies; acts as a clearing house for information; assists the societies in setting up new programmes and in improving or expanding old ones; coordinates international disaster operations. It functions under an executive committee and a board of governors in which every national society has representation.

The International Committee of the Red Cross [ICRC], a private, independent group of Swiss citizens chosen by co-optation (limited to twenty-five in number), acts during war or conflict whenever intervention by a neutral body is necessary, such action constitutes its special field of activity. As guardian of the Geneva Conventions and of Red Cross principles, it promotes its acceptance by governments, suggests their revision, works for further development of international humanitarian law, and recognizes new Red Cross Societies; it sends its Swiss delegates into prisoner-of-war camps, supervises repatriation, operates the Central Tracing Agency, supplies material relief, and the like.

The International Red Cross Conference, which met for the first time in 1867, is the highest legislative body. It is composed of representatives of the National Societies, the League, the International Committee, and the governments that have signed the Geneva Convention.

1.1 On the basis of your reading of the above passage, answer the following questions: (1x4=4)

- a) Which useful activities are performed by the Red Cross Societies?
- b) What are the functions of the League of Red Cross Society? (Mention any two)
- c) When does the International Committee of the Red Cross act?
- d) What is 'The International Red Cross Conference' composed of?

1.2 Find a word from the passage which means the same as:

(1)

'the return of someone to their own country'

SECTION B- WRITING

Q2. You are Stalin/Stuti. Yesterday, while returning home from school, you helped someone who desperately needed your help. Write a diary entry expressing your feelings and emotions in not more than 120 words. (3)

SECTION C- GRAMMAR

Q3. Fill in the blanks with appropriate words: (¼ x4=1)

Bird migration a) _____one of the greatest wonders of the natural world. b)_____ huge variety of birds make the journey: the tiny Rufous Hummingbird migrates up c)_____down the North American continent, while the Arctic Tern, Bird Life's emblem, migrates d)_____ pole to pole. In fact, roughly one in five bird species migrate.

Q4. The following passage has not been edited. There is an error in each line against which a blank is given. Identify the incorrect word and write the correct word in your answer sheet.

(½ x4=2)

	Incorrect	Correct
The Himalayas is the highest range of mountains of the world.	a) _____	_____
A name 'Himalaya' means 'land of snow' and this is rightly the	b) _____	_____
best description of these mountains are always covered	c) _____	_____
with snow. The Himalayas run since Pakistan to Tibet.	d) _____	_____

Q5. Read the following conversation and complete the following statements in reported speech.

(¼ x4=2)

Ravi: Did you attend the seminar yesterday?

John: No, I was busy completing the Science project.

Ravi: When is the date of submission?

John: We need to submit the project tomorrow.

Ravi asked John a) _____. John replied that b)_____ Science project. Ravi further wanted to know c) _____. John replied that d)_____.

SECTION D- LITERATURE

Q6. Read the following stanza and answer the following questions:

Then took the other, as just as fair,
And having perhaps the better claim,
Because it was grassy and wanted wear;
Though as for that the passing there
Had worn them really about the same,

- a) Which road did the poet choose? Why? (1)
b) Name a poetic device along with an example (1)

Q7. Describe the mechanical teacher that taught Margie and Tommy. (2)

Q8. Why didn't Bismillah Khan want to settle in USA? (2)

Q9. What did Ron Forbes say and do to encourage Evelyn Glennie? (3)

Q10. Why doesn't the child make a bold request to his parents for various things in the fair? (3)

Subject – Hindi

निर्देश : 1 दिए गए सभी प्रश्नों के उत्तर हिंदी की उत्तर - पुस्तिका में लिखिए।

2 कार्य स्वच्छ, शुद्ध एवं स्पष्ट लेख में कीजिए।

प्रश्न 1 (क) निम्नलिखित गद्यांश को पढ़कर पूछे गए प्रश्नों के उत्तर दीजिए :

ऐसे लोगों का साथ करना हमारे लिए बुरा है , जो हमसे अधिक दृढ़-संकल्प के हैं क्योंकि हमें उनकी हर बात बिना विरोध के मान लेनी पड़ती है। पर ऐसे लोगों का साथ कर लेना और भी बुरा है, जो हमारी ही बात को ऊपर रखते हैं, क्योंकि ऐसी दशा में न तो हमारे ऊपर कोई नियंत्रण रहता है और न हमारे लिए कोई सहारा रहता है। दोनों अवस्थाओं में जिस बात का भय रहता है, उसका पता युवकों को प्रायः बहुत कम रहता है। यदि विवेक से काम लिया जाए तो यह भय नहीं रहता। पर युवा पुरुष प्रायः विवेक से काम कम लेते हैं। कैसे आश्चर्य की बात है कि लोग एक छोड़ा लेते हैं, तो उसके सौ गुण-दोष परखकर लेते हैं पर किसी को मित्र बनाने में उसके पूर्व आचरण और स्वभाव आदि का कुछ भी विचार और अनुसंधान नहीं करते। वे उसमें सब बातें अच्छी-ही-अच्छी मानकर अपना पूरा विश्वास जमा देते हैं। हँसमुख चेहरा, बातचीत का ढंग, थोड़ी चतुराई या साहस-ये ही दो-चार बातें किसी में देखकर लोग चटपट उसे अपना मित्र बना लेते हैं। हम लोग यह नहीं सोचते कि मैत्री का उद्देश्य क्या है, क्या जीवन के व्यवहार में उसका कुछ मूल्य भी है। यह बात हमें नहीं सूझती कि यह ऐसा साधन है, जिससे आत्मशिक्षा का कार्य बहुत सुगम हो जाता है। विश्वासपात्र मित्र जीवन का एक औषध है। हमें मित्रों से यह आशा रखनी चाहिए कि वे उत्तम संकल्पों द्वारा हमें दृढ़ करेंगे, दोषों और त्रुटियों से हमें बचाएँगे, हमारे सत्य, पवित्रता और मर्यादा के प्रेम को पुष्ट करेंगे। जब हम कुमार्ग पर पैर रखेंगे, तब वे हमें सचेत करेंगे जब हम हतोत्साहित होंगे, तब वे हमें उत्साहित करेंगे। सारांश यह है कि हमें उत्तमतापूर्वक जीवन-निर्वाह करने में हर तरह से सहायता देंगे। सच्ची मित्रता में उत्तम वैद्य की-सी निपुणता और परख होती है, अच्छी-से-अच्छी माता का-सा धैर्य और कोमलता होती है। ऐसी ही मित्रता करने का प्रयत्न प्रत्येक व्यक्ति को करना चाहिए।

(क) हमारे लिए कैसे लोगों का साथ बुरा है ? लेखक ने इससे भी बुरा किसे कहा है ? (2x1=2)

(ख) लेखक को किस बात पर आश्चर्य होता है ? (2x1=2)

(ग) सच्चे मित्र का क्या कर्तव्य बताया गया है ? (2x1=2)

(घ) सच्ची मित्रता से क्या होता है ? (2x1=2)

(इ) 'उत्साहित' शब्द में से मूल शब्द व प्रत्यय अलग कीजिए। (1x1=1)

(च) उपर्युक्त गद्यांश के लिए उपयुक्त शीर्षक लिखिए। (1x1=1)

प्रश्न 2 निम्नलिखित गद्यांश को पढ़कर पूछे गए प्रश्नों के उत्तर दीजिए :

भारतीय साहित्य और संस्कृति में जिन वृक्षों का सबसे अधिक उल्लेख हुआ है, कदंब उनमें से एक है। ब्रज का यह फूलदार वृक्ष जब फूलता है तब हल्के पीले रंग के छोटे-छोटे फूलों से भर जाता है। उस समय इसके फूलों की मादक सुगंध से ब्रज के समस्त वन और उपवन महकने लगते हैं। कदंब वृक्ष का भारतीय संस्कृति तथा साहित्य से गहरा नाता रहा है। वटवृक्ष, पीपल, नीम, आंवला, पलाश, अशोक आदि वृक्षों की भाँति कदंब भी जनमानस में रचा बसा है। वर्षा ऋतु में कदंब का वृक्ष पीले रंग के गोल फूलों से लद जाता है। तब इसकी सुंदरता बहुत आकर्षक हो जाती है। पीले फूलों की गंध बड़ी ही मनभावन होती है। वामन पुराण के अनुसार कदंब अर्थात् कंदर्प यानि कामदेव के कर से उपजा वृक्ष है। इसी कारण इसके फूलों की गंध वातावरण को मादक बना देती है। यह भी कहा गया है कि कामदेव अपने धनुष पर जिस फूल का तीर चढ़ाते हैं वह कदंब ही है। रामायण में लिखा है कि जब श्रीराम ऋष्यमूक पर्वत पर भ्रमण कर रहे थे तब वहाँ के भँवरे कदंब के फूलों का रसपान करने में इतने मस्त हो गए कि बारिश आने पर उनसे उड़ा नहीं गया और बहुत सारे भ्रमर पानी की तेज़ धारा में बहने लगे। अरण्य कांड के अनुसार पंचवटी में लगे वृक्षों में कदंब प्रमुख था। किकिंशा कांड में राम कदंब की प्रशंसा करते हैं। विष्णु पुराण में उल्लेख है कि बलराम को कदंब के फूलों से बनी मदिरा पंसद थी। इस पुराण में कदंब को ग्यारह योजन ऊँचा वृक्ष कहा गया है।

(क) भारतीय संस्कृति और साहित्य में कदंब क्या महत्त्व है ? (2x1=2)

(ख) कामदेव और कदंब का क्या संबंध बताया गया है ? (2x1=2)

(ग) रामायण में कदंब के बारे में क्या वर्णन पाया जाता है ? (2x1=2)

(घ) विष्णु पुराण में कदंब की ऊँचाई कितनी बताई गई है ? (2x1=2)

(इ) 'उल्लेख' शब्द में से मूल शब्द व उपसर्ग लिखिए। (1x1=1)

(च) उपर्युक्त गद्यांश के लिए उपयुक्त शीर्षक लिखिए। (1x1=1)

Subject - Mathematics

- Q1.** Express $0.437437\dots$ in the form m/n (2)
- Q2.** Locate $\sqrt{3}$ on the number line. (2)
- Q3.** Show that $0.33\dots$ can be expressed in the form p/q , where p and q are integers and $q \neq 0$. (2)
- Q4.** Find five rational numbers between $3/5$ and $4/5$. (2)
- Q5.** Represent 4.862 on number line (3)
- Q6.** Find the decimal expansion of $\sqrt{2}$ up to six decimal places. (3)
- Q7.** Find five rational numbers between 1 and 2 . (3)
- Q8.** Define Rational number. (3)
- Q9.** Express $0.5999\dots$ in the form p/q , where p and q are integers and $q \neq 0$. (5)
- Q10.** Prove that the sum of a rational number and an irrational number is an irrational number. (5)

Subject: Science

Objectives:

- Revision of concepts
- Application of the concepts to real life situations.
- Skills to carry out research work and develop scientific aptitude.

Instructions:

- Neatly write all the answers in your science notebook.
- Attempt the questions keeping in mind the weightage of each question.

Week- I

Project Work

1. Download the app 'frequency generator' from play store.
2. Open the option for superimposing one wave on another.
3. Prepare a symphony of 15 seconds, record, rename and mail the audio file to the respective teacher.
4. Listen to different frequencies of sound in the app and fill the table to check the sensitivity of your ears.

S. No.	Frequency	Audible/ Inaudible
1	6 Hz	
2	20 Hz	
3	30Hz	

5. Repeat step 4 with family members of different age groups. Does the sensitivity of ears change with age?

Q1. An object is moving in a circle of radius 'r'. Calculate the distance and displacement.

- i) when it completes half the circle.
- ii) when it completes one full circle. (2)

Q2. Equal amount of water and ether are placed in two separate plates. Which of the two liquids will evaporate faster? Give reason. (2)

Q3. Define Kinetic energy. How does the kinetic energy of particles of matter affected by the change in temperature? (2)

Q4. A bacterium has a single chromosome, but an amoeba has several chromosomes. Explain? (2)

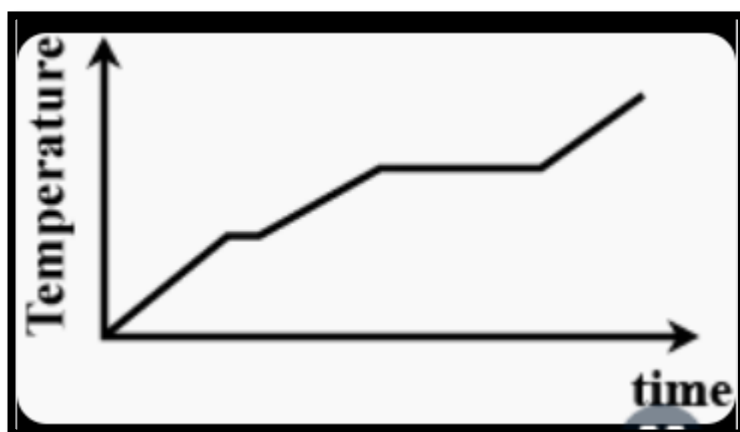
Q5. A car moving at a rate of 72 km/h and applies brakes which provide a retardation of 5ms^{-2} . (3)

iii) How much time does the car take to stop?

ii) How much distance does the car cover before coming to rest?

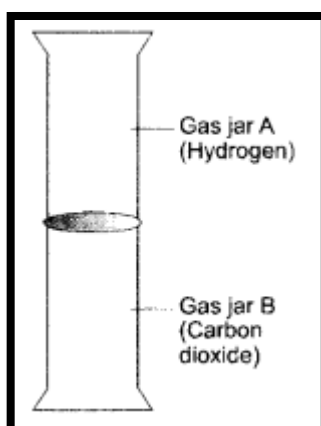
iii) What should be the stopping distance needed if the speed of the car is doubled?

Q6. Consider the heating curve below. The graph represents temperature changes for a substance as heat is added at a steady rate. Which is larger for the given substance – latent heat of fusion or latent heat of vaporisation? Justify your answer. (3)



Q7. (i) State the various factors that affect the rate of evaporation. (2+1=3)

(ii) The diagram shows an experiment in which gases hydrogen and carbon dioxide are placed in two jars as shown in the figure. If the lid separating the two jars be removed, what will the constituents in the gas jar A after a few minutes?



Q8. (i) Label the figure and answer the following questions: (3)

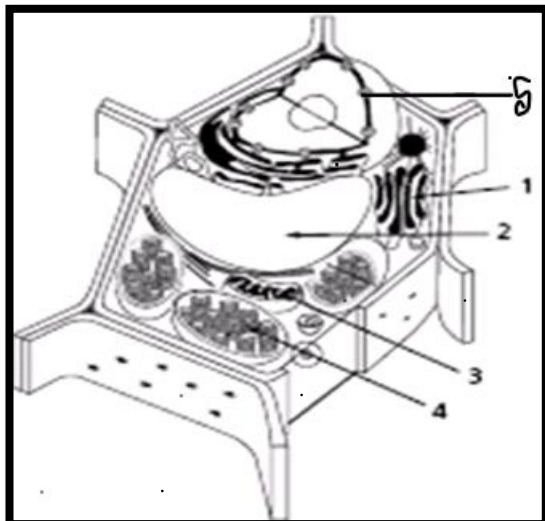
(a) 1 – It is the packaging organelle

(b) 2- Provides rigidity

(c) 3– Provides energy

(d) 4 – Helps in photosynthesis.

(ii) What is the main function of labelled part '5'?



Q9. A body starts from rest and moves with a uniform acceleration of 5m/s^2 for 5s and then it moves with a constant velocity for 4s. Later it slows down and comes to rest in 5s. Draw the velocity graph for the motion of the body and answer the following questions: (5)

- What is the maximum velocity attained by the body?
- What is the distance travelled during this period of acceleration?
- What is distance travelled when the body was moving with constant velocity?
- What is the retardation of the body while slowing down?
- What is the distance travelled during retardation?

Q10. What is endocytosis? Why is endocytosis found only in animal cells? Illustrate with the help of a suitable example. (5)

Subject: Social Science

- Q1.** Why is democracy not preferred? Give two reasons. (2)
- Q2.** “Democracy improves the quality of decision making.” How? (2)
- Q3.** Mention any two dirty tricks used by PRI to win elections. (2)
- Q4.** Besides Syria, to which country can you relate this picture with and why? (2)



- Q5.** How was the French society organised before the revolution of 1789? (3)
- Q6.** What do you know about the abolition of slavery in France? (3)
- Q7.** How was the Church responsible for the French Revolution? (3)
- Q8.** State the election process of the National Assembly in France. (3)
- Q9.** What is the significance of Himalayas? Share your views. (5)
- Q10.** What is unemployment? Explain the types of unemployment found in India. (5)

Subject: Computer Science

Multiple Choice Questions:

1. The Libre Office Writer is a popular application
a) Graphic b) Presentation c) Word Processing d) Book1 1
2. A document created in Writer is saved with an extension
a) .odt b) .ott c) .dbm d) .ods 1
3. The combination of keys moves the cursor to the end of the document.
a) Home b) Page Up c) End d) ctrl+Home 1
4. The feature of LibreOffice Writer automates the process of search as well as replacement of the text.
a) Find & Replace b) Find c) Find All d) Replace 1
5. Which of the following is not the component of the Libre Office Suite?
a) Writer b) Impress c) Base d) Internet Explorer 1

6. Fill in the blanks:-

5

- a) The is a set of predefined styles and settings that is used to create a new document.
b) is called the distance between the text boundaries and the page margins.
c) The full form of WYSIWYG is
d) The characters do not appear in a printed document.
e) A particular mark that represents some piece of information is called a

7. Write the shortcut for the following commands: -

5

- a) To align the text to the center of the document page.
b) To apply the Cycle case to the selected text in the document.
c) To place the selected text slightly above the line of the text.
d) To jump to a specific page number in the document.
e) To remove the formatting of the copied text in the document.

8. PRACTICAL WORK:

Perform the following practicals on OpenOffice Writer and mention the steps with screenshots in a MS- Word document. 5

- a) Apply superscript and subscript to display the formula. Also apply the highlighter mentioned on the specific formula within the brackets.

$C_6H_{12}O_6$ (Dark Purple 4, Change Font Color to White)

C_2H_5COOH (Light Magenta 1, Font Color to White)

$E=mc^2$ (Light Lime 2)

$G=(m_1*m_2)/r^2$ (Indigo, Change Font Color to White)

H_2SO_4 (Light Orange 3, Change Font Color to Light Indigo 1)