

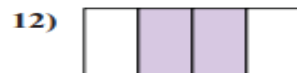
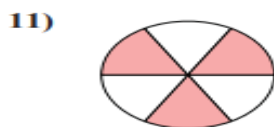
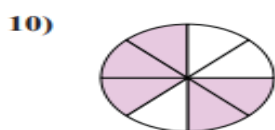
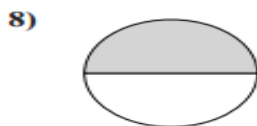
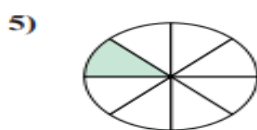
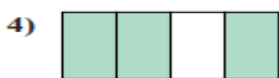
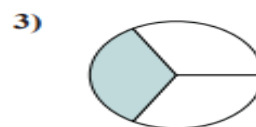
REVISION WORKSHEET – FRACTIONS
SUBJECT - MATHEMATICS

NAME: _____ ROLLNO: _____ DATE: _____ CLASS-IV

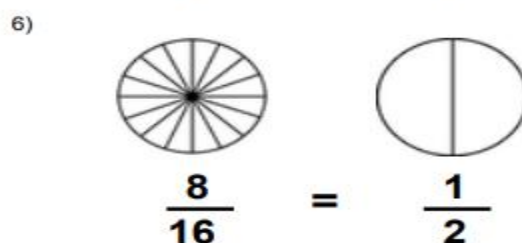
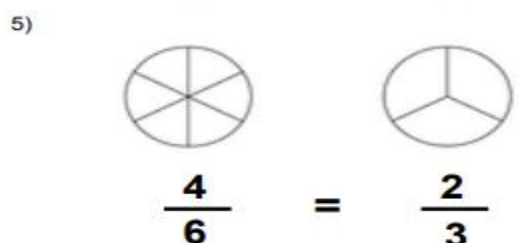
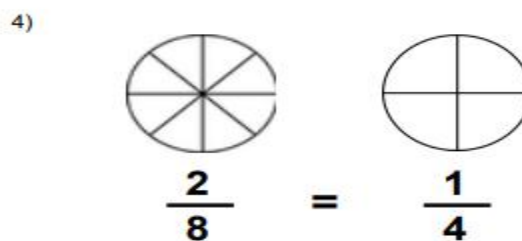
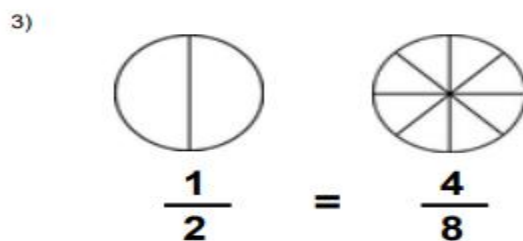
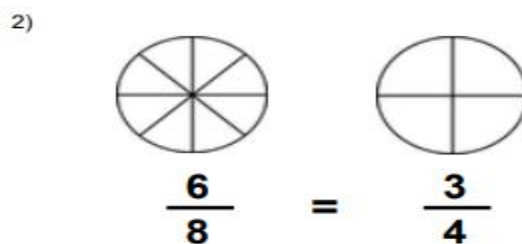
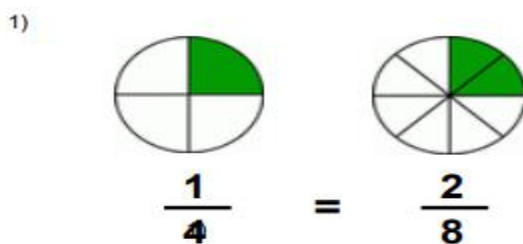
1. Circle the proper fractions with red colour, improper fractions with blue colour and unit fractions with green colour:

$$\frac{4}{2}, \frac{1}{25}, \frac{5}{6}, \frac{3}{2}, 4\frac{7}{9}, \frac{8}{11}, 5\frac{6}{9}, \frac{23}{5}$$

2. Write the shaded amount as a fraction of the whole amount.



3. Colour in the equivalent fraction.



4. Complete the equivalent fractions.

1. $\frac{2}{3} = \frac{4}{\quad}$

2. $\frac{\quad}{4} = \frac{3}{12}$

3. $\frac{\quad}{12} = \frac{100}{120}$

4. $\frac{1}{\quad} = \frac{4}{24}$

5. $\frac{5}{9} = \frac{25}{\quad}$

6. $\frac{\quad}{4} = \frac{24}{32}$

7. $\frac{\quad}{7} = \frac{8}{56}$

8. $\frac{1}{2} = \frac{10}{\quad}$

9. $\frac{2}{\quad} = \frac{16}{80}$

10. $\frac{2}{5} = \frac{\quad}{25}$

11. $\frac{6}{\quad} = \frac{36}{48}$

12. $\frac{2}{\quad} = \frac{14}{21}$

13. $\frac{\quad}{12} = \frac{9}{36}$

14. $\frac{12}{25} = \frac{\quad}{75}$

15. $\frac{8}{\quad} = \frac{24}{36}$

5. Complete the equivalent fractions.

1. $\frac{1}{3} = \frac{10}{\quad} = \frac{3}{\quad}$

2. $\frac{8}{9} = \frac{\quad}{36} = \frac{\quad}{72}$

3. $\frac{2}{5} = \frac{18}{\quad} = \frac{6}{\quad}$

4. $\frac{1}{25} = \frac{6}{\quad} = \frac{5}{\quad}$

5. $\frac{1}{2} = \frac{8}{\quad} = \frac{2}{\quad}$

6. $\frac{82}{100} = \frac{164}{\quad} = \frac{\quad}{600}$

7. $\frac{2}{5} = \frac{4}{\quad} = \frac{12}{\quad}$

8. $\frac{3}{25} = \frac{\quad}{200} = \frac{15}{\quad}$

9. $\frac{1}{3} = \frac{\quad}{30} = \frac{\quad}{12}$

10. $\frac{2}{4} = \frac{\quad}{12} = \frac{8}{\quad}$

11. $\frac{5}{9} = \frac{50}{\quad} = \frac{25}{\quad}$

12. $\frac{9}{12} = \frac{81}{\quad} = \frac{\quad}{36}$

13. $\frac{1}{10} = \frac{\quad}{60} = \frac{\quad}{40}$

14. $\frac{7}{8} = \frac{\quad}{72} = \frac{\quad}{64}$

15. $\frac{5}{7} = \frac{50}{\quad} = \frac{15}{\quad}$