



St. Mary's School, Dwarka
Holiday Homework
Std. IX
Week 3
Worksheet 3
Subject: English

Q1. Read the following passage.

(1x5=5)

- i. Education and awareness play a crucial role in achieving sustainable development. To create lasting change, it is essential to educate individuals and communities about the principles and practices of sustainability. This includes promoting environmental literacy, fostering a sense of responsibility towards natural resources, and encouraging sustainable lifestyle choices.
- ii. The concept of sustainable development has gained significant attention in recent years as societies strive to find a balance between economic growth, social progress, and environmental protection. Sustainable development aims to meet the needs of the present generation without compromising the ability of future generations to meet their own needs.
- iii. One key aspect of sustainable development is the conservation and responsible use of natural resources. This involves managing resources such as forests, water, and minerals in a way that ensures their long-term availability while minimizing negative environmental impacts. It also includes promoting renewable energy sources and reducing reliance on fossil fuels to combat climate change.
- iv. Sustainable development is closely linked to economic prosperity. It recognizes the need for economic growth, but not at the expense of social well-being and environmental degradation. It advocates for sustainable business practices that consider the triple bottom line: people, planet, and profit.
- v. Raising awareness about sustainable development encourages widespread participation and engagement. Through campaigns, workshops, and media outreach, we can promote a broader understanding of the interconnectedness between social, economic, and environmental issues. By fostering a sense of urgency and highlighting the potential benefits of sustainable practices, we can inspire individuals, communities, and organizations to take action.
- vi. Achieving sustainable development requires collaboration and partnerships at all levels, including governments, businesses, civil society organizations, and individuals. It calls for collective action and innovative solutions to address the complex challenges we face, such as poverty, inequality, and environmental degradation.

Based on your understanding of the passage, attempt the questions given below.

- i. Sustainable development aims to meet the needs of the present generation without_____.
- ii. What is the triple bottom line concept in sustainable development?
 - a) People, profit, and poverty
 - b) Profit, planet, and poverty
 - c) People, planet, and profit

- d) Planet, poverty, and progress
- iii. The complex challenges that sustainable development aims to address are _____.
- iv. Which of the following statements is **NOT TRUE**?
Sustainable development _____
- a) aims to meet the needs of the present generation.
 - b) is the conservation and responsible use of natural resources.
 - c) is not linked with economic prosperity and aims at personal growth.
 - d) requires collaboration and partnerships at all levels.
- v. Find a word from the passage which means the same as ‘**the state of being successful with good fortune.**’

Answer questions 2 to 4 in 20-40 words.

Q2. Why do you think Margie finds the idea of a school with human teachers and other students strange in the lesson “**The Fun They Had**”? (2)

Q3. Why does the child get separated from his parents? (2)

Q4. How does the wind affect the poet's surroundings? (2)

Answer question 5 in 100-120 words.

Q5. Animals should be treated with love and respect. Justify this statement by taking hints from the lesson ‘The Adventures of Toto.’ (3)

Q6. Design five bookmarks inspired by the poem 'The Road Not Taken' and the chapter ‘The Sound of Music.’ (5)

Q7. Fill in the blanks with the correct form of the words given in the bracket. (1/2x4=2)

Richard Fox (a) _____ (live) in a small city in Hong Kong. Now he lives in England. He (b) _____ (like) England because of its convenient location in Europe which (c) _____ (allow) him to visit many countries in the region. He says that living in a city like England is very different from the small town in Hong Kong where he was (d) _____ (bring) up. His short stay in England has given him a broader outlook on life.

Q8. Fill in the blanks with suitable words. (1/2x4=2)

Milk is a complete food, full of vitamins and proteins. Children (a) _____ drink it regularly, otherwise they (b) _____ suffer from under-nourishment. Elders (c) _____ also take it but those who (d) _____ afford it, must take pulses, vegetables and fruits as an alternative.

Q9 Write a descriptive paragraph in 100 -120 words on Bismillah Khan using the hints given below.

Bismillah Khan learnt from uncle Ali Bux Vishnu temple of Banaras
Balaji and Mangla Maiya temples on Ganga — favourite places for Bismillah —
selected for All India Radio (1938) — honour of playing shehnai on 15th August
1947 — ‘Gunj Uthi Shehnai film — songs famous — performed in USA, Canada, etc.
— fond of Benaras- symbol of India’s composite culture — awarded Bharat Ratna in 2001. (3)

Q10. Recently, you paid a visit to an ‘Old Age Home’ with other N.S.S. Volunteers. Write a diary entry of what you saw and experienced there. (4)

Subject: Hindi

प्रश्न 1 गद्यांश को ध्यानपूर्वक पढ़कर दिए गए प्रश्नों के उत्तर दीजिए—

(1x5=5)

हर आदमी की यह जन्मजात इच्छा होती है कि उसे अपने आस-पास घटने वाली सभी बातों की जानकारी मिलती रहे। 'समाचार-पत्र' मनुष्य की इसी इच्छा को पूरा करने का काम करते हैं। समाचार-पत्रों के माध्यम से वह अपनी बाहरी दुनिया से जुड़ जाता है। देश-विदेश में क्या हो रहा है, सबकी जानकारी देने का काम समाचार-पत्र करते हैं। भारत में समाचार-पत्रों का प्रचलन अंग्रेजों के समय से आरंभ हुआ। हमारे देश में पहला समाचार-पत्र कोलकाता से अंग्रेजी में निकला था। धीरे-धीरे हिंदी तथा अन्य प्रादेशिक भाषाओं में भी समाचार-पत्र निकलने लगे। जैसे कि प्रायः चाय पीने की आदत लोगों को पड़ जाती है, ठीक वैसे ही समाचार-पत्र पढ़ने की आदत पड़ जाती है। समाचार-पत्रों से एक ओर तमाम घटनाओं की सूचना मिलती है तो दूसरी ओर ज्ञान-वृद्धि और मनोरंजन भी होता है। समाचार-पत्रों में हर व्यक्ति की रुचि की सूचना-सामग्री होती है। खेलों में शौक रखनेवालों को खेल-कूद संबंधी जानकारी, राजनीति पसंद लोगों के लिए राजनैतिक गतिविधियाँ, फिल्मों के शौकीन लोगों को फिल्म-समाचार, व्यापारी वर्ग के लिए शेयर बाजार तथा बाजार भावों की स्थिति आदि के अलावा देश-विदेश की प्रमुख घटनाओं की जानकारी, चुनाव-समाचार तथा महत्वपूर्ण विषयों पर संपादकीय भी समाचार-पत्रों के माध्यम से पढ़ने को मिलते हैं। ज्योतिष तथा भविष्य-फल, लॉटरी के परिणाम, परीक्षा-परिणाम, तरह-तरह के विज्ञापन भी समाचार-पत्रों के माध्यम से ही जनता तक पहुँचते हैं।

(क) आस-पास घटने वाली सभी बातों की जानकारी किससे मिलती है ?

1

- 1 पत्रों से
- 2 समाचार पत्रों से
- 3 विज्ञापनों से
- 4 फिल्मों से

(ख) भारत में समाचार-पत्रों का प्रचलन किसके समय से आरंभ हुआ ?

1

- 1 मुगलों के समय से
- 2 राजाओं के समय से
- 3 पुराने समय से
- 4 अंग्रेजों के समय से

(ग) हमारे देश में पहला समाचार-पत्र कोलकाता से किस भाषा में निकला था ?

1

- 1 अंग्रेजी
- 2 हिंदी
- 3 संस्कृत
- 4 उर्दू

(घ) गद्यांश में समाचार पत्र पढ़ने की तुलना किससे की है ?

1

- 1 भोजन करने से
- 2 भ्रमण करने से
- 3 चाय पीने से
- 4 व्यायाम करने से

(ङ) 'प्रादेशिक' शब्द में कौन-सा मूल शब्द व प्रत्यय सही है ?

1

- 1 प्रादेश और इक
- 2 प्रदेश और इक
- 3 प्रा और देशिक
- 4 प्रदे और इक

प्रश्न 2 शब्द कहाँ पाए जाते हैं?

1

- 1 शब्दकोश में 2 अर्थकोश में 3 वाक्यों में 4 अर्थों में

प्रश्न 3 पद कहाँ पाए जाते हैं?

1

- 1 पदकोश में 2 शब्दकोश में 3 वाक्यों में 4 स्वरों में

प्रश्न 4 जंगल शब्द में किस चिह्न का प्रयोग हुआ है ?

1

- 1 अनुनासिक 2 नुक्ता 3 विराम 4 अनुस्वार

प्रश्न 5 शब्द पद कब बन जाता है ?

1

- 1 अर्थ निकलने पर 2 वाक्य में प्रयुक्त होने पर
2 विलोम होने पर 4 पर्याय होने पर

प्रश्न 6 निम्नलिखित में से सही वर्तनी वाला विकल्प कौन-सा है ?

1

- 1 हरियाली 2 हरियाली 3 हरीयाली 4 हरयाली

प्रश्न 7 लेखक भगवाना की माँ और संभ्रांत महिला की तुलना द्वारा समाज को क्या संदेश देना चाहते हैं? (3)

प्रश्न 8 नज़दीक से एवरेस्ट को देखकर लेखिका को कैसा लगा ? (3)

प्रश्न 9 निम्नलिखित प्रश्नों के उत्तर लगभग 20 से 25 शब्दों में लिखिए। (2×1= 2)

(क) लेखिका के अस्पताल में होने पर गिल्लू के कार्यकलापों में क्या अंतर आया?

(ख) गिल्लू परिचारिका की भूमिका किस प्रकार निभाता था ? (2×1= 2)

प्रश्न 10 भारत की राजधानी में निरंतर बढ़ती गरमी के कारण और उपायों के विषय में दो नेताओं के मध्य हुई बातचीत को संवाद के रूप में 80 से 100 शब्दों में लिखिए। (5×1= 5)

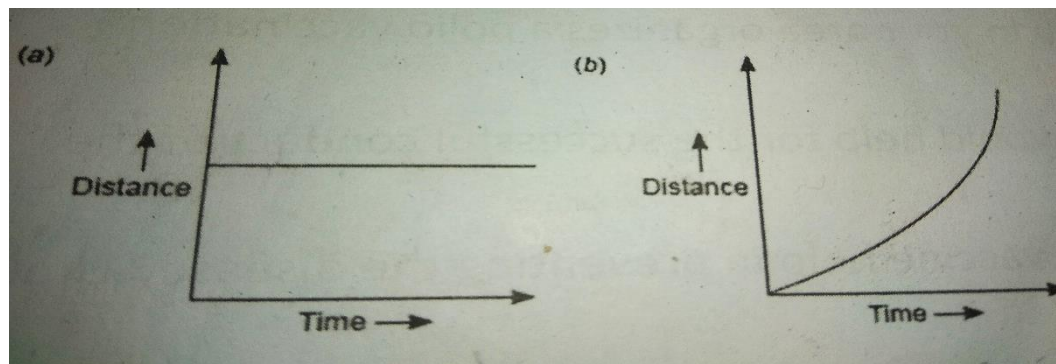
Subject: Mathematics

- Q1. If $x = 2 + \sqrt{5}$, Prove that $x^2 + 1/x^2 = 18$ 2
- Q2. Express $1.\overline{32} + 0.35$ as a fraction in simplest form. (166/99) 2
- Q3. Rationalise the denominator $1 / (\sqrt{6} + \sqrt{5} - \sqrt{11})$ 2
- Q4. If $x = 0.125$, find the value of $(1/x)^{1/3}$ 2
- Q5. Define Rational number. 2
- Q6. If $a = \sqrt{3} + \sqrt{2}$ and $b = \sqrt{3} - \sqrt{2}$, find the value of $a^2 + b^2$ 3
- Q7. If $a = 9 - 4\sqrt{5}$, find the value of $a - 1/a$ 3
- Q8. If $x = 1 - \sqrt{2}$, find the value of $x - 1/x$ 3
- Q9. solve (a) $16^{3/4}$ (b) $243^{2/5}$ 3
- Q10. If a and b are rational numbers, find a and b 3
- $(\sqrt{2} + \sqrt{3}) / (3\sqrt{2} - 2\sqrt{3}) = a + b\sqrt{6}$

Subject: Science

Q1 What would be the acceleration of a body if its velocity-time graph is a line parallel to the time axis? (1)

Q2. What type of motion is described by the following graphs? (1)



Q3. “Osmosis is a special kind of diffusion”. Explain. (2)

Q4. What are the functional differences between a plasma membrane and cell wall? (2)

Q5. Differentiate between uniform and non-uniform motion. (3)

Q6. Give reasons- (3)

- (a) Gases can be substantially compressed but liquids cannot be compressed much. Why?
- (b) A balloon when kept in sun, bursts after sometime. Why?
- (c) Water-cooler is not effective in coastal areas.

Q7. Write two similarities and one dissimilarity between mitochondria and plastid. (3)

Q8. An object is moving along a straight line with uniform acceleration. The table given below gives the velocity of the object at various instants of time. (5)

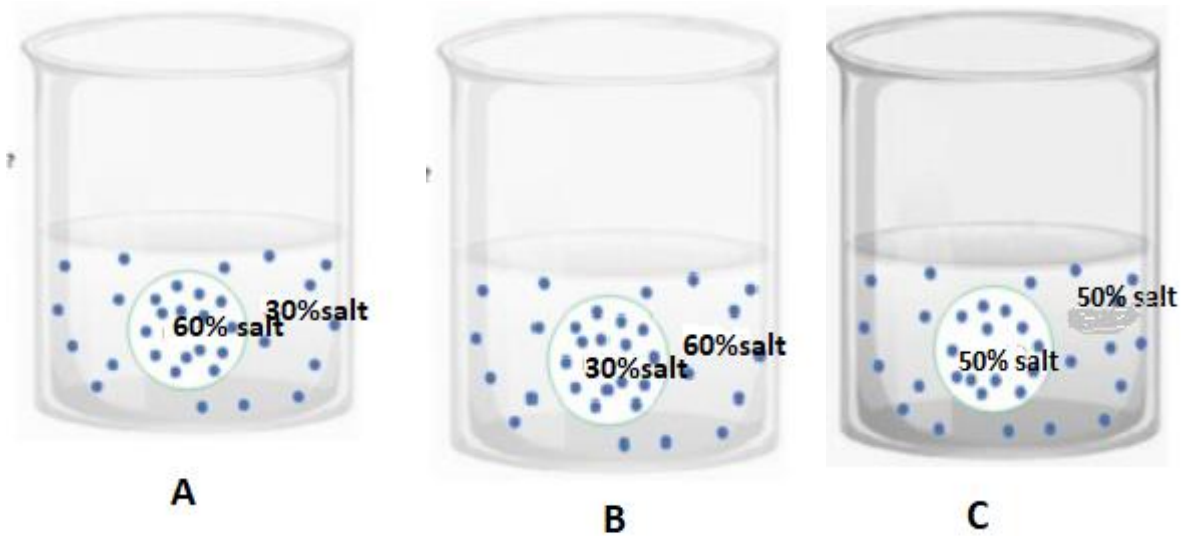
Time (in sec.)	0	1	2	3	4	5	6
Velocity (in m/s)	2	4	6	8	10	12	14

Plot the v-t graph for the given data and answer the following:

- (i) Find the velocity of the object at the end of 2.5 seconds.
- (ii) Calculate the acceleration.
- (iii) Calculate the distance covered in the least 4 seconds.

Q9. Demonstrate an activity to show the effect of temperature on the state of ice. On a graph paper, draw a graph plotting temperature versus time for ice. (2+3=5)

Q10. Label the given solutions A, B and C. Write any five points of differences between the solutions based on the tonicity. (5)



Subject: Social Science

- Q1. What does the term 'conservative' mean? 1
- Q2. List the names of two workers' associations. 1
- Q3. Which is the largest and smallest state of India area wise? 1
- Q4. Do you think that physical barrier is a hindrance in interaction with our neighbouring countries in modern times? Give some examples how we have overcome these difficulties in the present day. 2
- Q5. What do you think this cartoon is saying? Why is 'democracy' written the way it is? 3











- Q6. "Although having a democratic system, Pakistan was not practising democracy". Elucidate. 3
- Q7. What are the ill effects of the Green Revolution? 3
- Q8. What can be done so that more non-farm production activities can be started in villages? 3
- Q9. Explain in brief Lenin's contribution to the Russian Revolution of 1917. 5
- Q10. On the Political map of India, locate and label the following:- 3
- (a) The strait separating Sri Lanka from India.
 - (b) The eastern and the western-most longitude in degrees.
 - (c) The States through which the Tropic of Cancer passes.

Subject: Artificial Intelligence

I. Recognize and name the following Sustainable Development Goals: -

1x8=8

i 	ii 
iii 	iv 
v 	vi 
vii 	viii 

II. Write the full form for the following terms:-

1x5=5

1. GPU
2. HCI
3. AI
4. ANN
5. NLP

III. Answer the following questions: -

2x4=8

1. Mention the guidelines for taking care of your hair, skin and hands.
2. What are the steps required to set the goals?
3. Why it is important to maintain personal hygiene?
4. Complete the following table with respect to the development of AI.

YEAR	DEVELOPMENT
1943	
2002	
2014	
2018	