



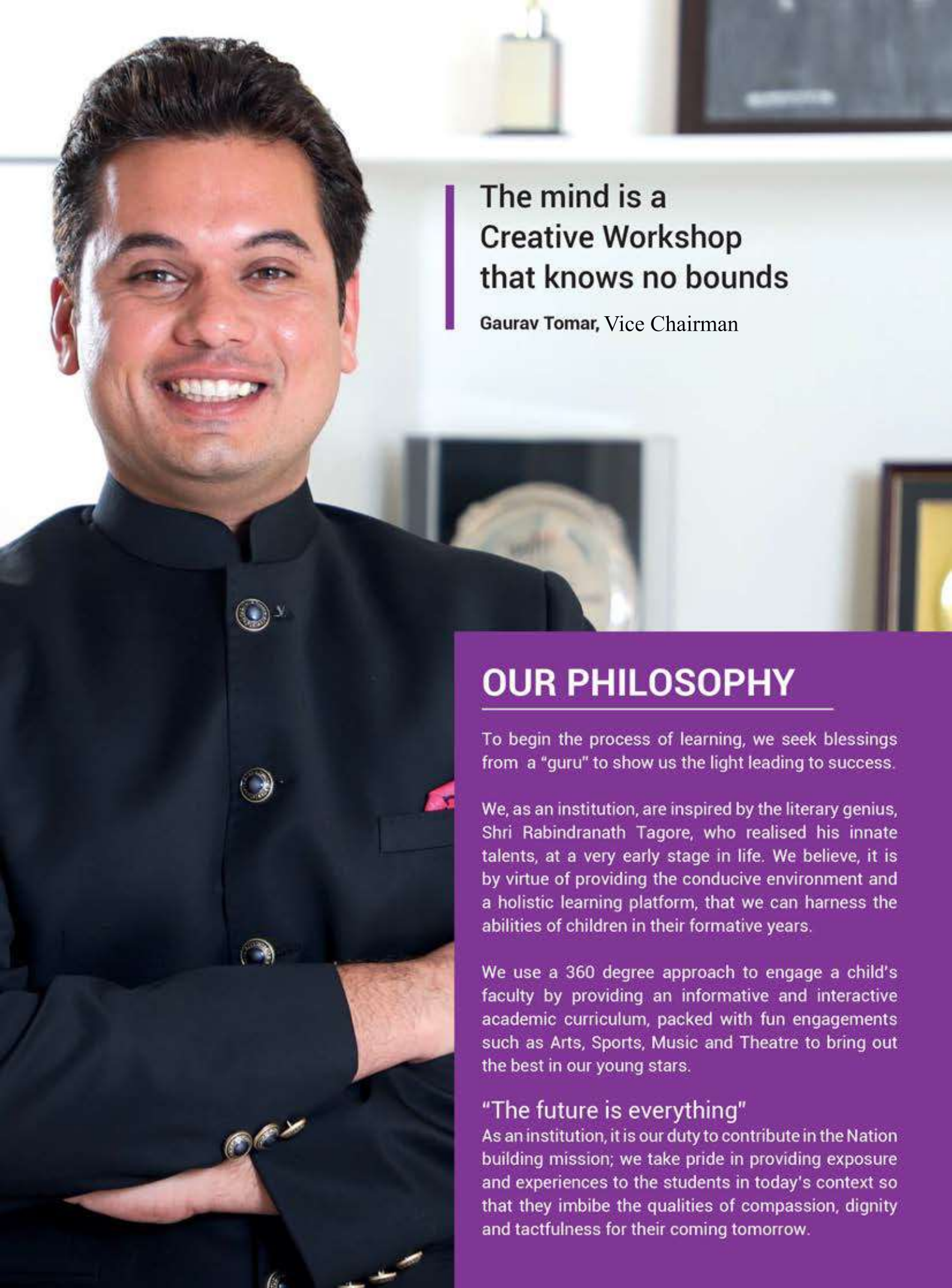
Rabindranath World School Gurugram

NURTURE | EDUCATE | EXCITE



PROSPECTUS

www.rwsgurgaon.com



The mind is a Creative Workshop that knows no bounds

Gaurav Tomar, Vice Chairman

OUR PHILOSOPHY

To begin the process of learning, we seek blessings from a "guru" to show us the light leading to success.

We, as an institution, are inspired by the literary genius, Shri Rabindranath Tagore, who realised his innate talents, at a very early stage in life. We believe, it is by virtue of providing the conducive environment and a holistic learning platform, that we can harness the abilities of children in their formative years.

We use a 360 degree approach to engage a child's faculty by providing an informative and interactive academic curriculum, packed with fun engagements such as Arts, Sports, Music and Theatre to bring out the best in our young stars.

"The future is everything"

As an institution, it is our duty to contribute in the Nation building mission; we take pride in providing exposure and experiences to the students in today's context so that they imbibe the qualities of compassion, dignity and tactfulness for their coming tomorrow.



Rabindranath World School Gurugram

MISSION

Our mission is to provide a caring and creative environment to support the holistic development of each child and inspire them through positive knowledge creation.



VISION

Rabindranath World School aspires to be the centre of excellence in scholastic, sports, music and arts education and in times to come will inspire other educational institutions globally.



LIFE AT RWS

- ◆ Sprawling Campus
- ◆ Wi-fi enabled Smart Classrooms
- ◆ RWS Library
- ◆ Student Counselling
- ◆ Sports Infrastructure
- ◆ Medical Room
- ◆ Cafeteria
- ◆ Highly competent & experienced faculty
- ◆ State of the art Computer laboratories
- ◆ Auditorium for performing arts
- ◆ Career Guidance Cell
- ◆ Fully equipped Science Labs
- ◆ Roof Top Boxing Facility (10,000 sq ft.)
- ◆ Music Curriculum by Chromatics
- ◆ Fully A/C school and transport



ACADEMICS

Our school is a CBSE affiliated school and offers four main streams (Medical, Non Medical, Commerce & Humanities) with the best possible combination of other subjects as per CBSE guidelines. Along with classroom learning, we provide students with maximum exposure by means of excursions, activities, inter- house competitions etc.

CHOICE OF SUBJECTS

Category 1 (Non Medical)	Category 2 (Medical)	Category 3 (Commerce with Maths)	Category 4 (Commerce without Maths)	Category 4 (Humanities)
English (Core) * Mathematics * Physics * Chemistry * Economics/ Computer* PE/Applied Art (Optional)/ Games	English (Core) * Physics * Chemistry * Biology * Economics/Computer* PE/ Applied Art (Optional)/ Games	English (Core) * Business Studies * Accounts * Economics * Maths * PE/ IP/Applied Art (Optional)/ Games	English (Core) * Business Studies * Accounts * Economics * Legal Studies/ IP* PE/ Applied Art (Optional)/ Games	English (Core) * Geography/ Pol. Science* Economics/ Hindi(Core) * Sociology/History * Legal Studies /Maths/IP* PE/Applied Art(Optional)/ Games

*Compulsory Subjects

ASSESSMENTS

- ◆ The children in Pre-Primary school do not have any formal tests. They are evaluated regularly on the basis of their class performance on assessment sheets.
- ◆ Assessment for primary to senior school includes written, classwork and practical assessment.
- ◆ There are clear guidelines, which explain the standard of achievement for different grades.
- ◆ CBSE examination sessions occurs twice a year along with two periodic exams (Term1 and Term2). Results are declared in September and March.



RWS FAMILY

The RWS approach helps to develop learners who are:

RESPONSIBLE

DISCIPLINED

ASSERTIVE

ENGAGED
(SELF- RELIANT)



RWS Kids with President Ramnath Kovind



Kiran Bedi with RWS Family



MC Mary Kom with RWS Family on Sports Day



Air Chief Marshal B.S. Dhanoa



Mr. Harinder Sikka Author of Calling Sehmat - RAAZI



Vijender Singh on Sports day



World No. 1 Pistol Shooter (2014) Heena Sidhu



Sushil Kumar with RWS kids on sports day

SPORTS EDUCATION

Sports is a great way to self-discovery and to stay healthy & fit. We have various sports disciplines and infrastructure to motivate children of all age groups.



Basketball



Football



Athletics



Boxing



Volleyball



Badminton



Tennis



Table Tennis



Martial Arts



CHROMATICS – MUSIC EDUCATION

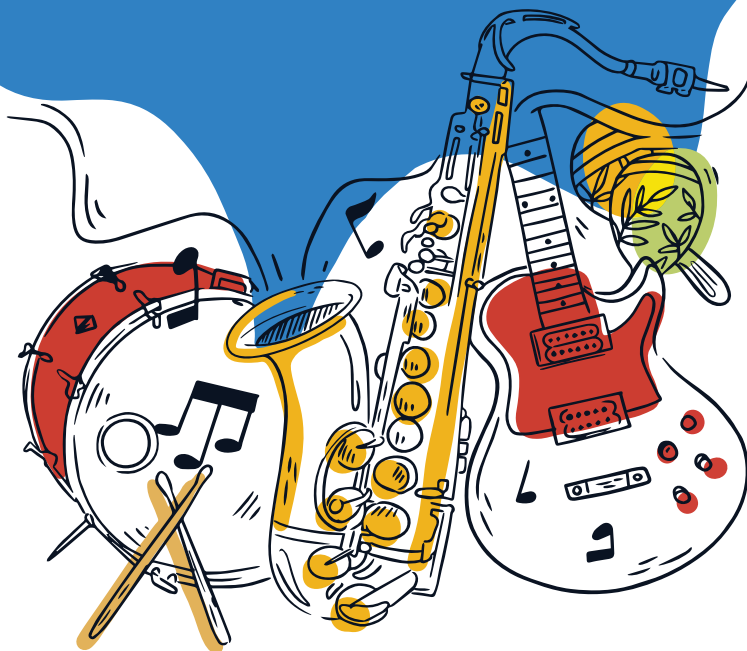
We, at RWS, believe that music can enhance student's creativity and exposure to music at a very young age, can bring out the best in them.

A fun and interactive Music curriculum designed by Prof. Gerald Wirth, a 2 time Grammy Awardee and the Director of prestigious Vienna Boys Choir, aims at creating a perfect learning environment for all age groups so that they can explore themselves and be in tune with life.

For More Info. www.chromaticsindia.com



**The Wirth Method -
International Music Curriculum**



BOXING AND MARTIAL ARTS

In today's world, we feel being conscious about ourselves and our surroundings, is crucial. We emphasize on Boxing/Self defence/ Martial arts to boost the confidence of our children. The Knockout Fight Club, is one of its kind training facility spread over 10,000 sq ft that features a Kingsize Boxing ring along with other functional training equipments.

For More Info. www.knockoutfightclub.com



LIZA VARMA GROOMING INSTITUTE

It is our pleasure to collaborate with Former Miss India Liza Varma to start a professional Acting and Grooming Institute within our school premises. Liza and her team will be working closely with the students to groom and build their positive personality.

For More Info. www.lizavarmaacademy.com

SAFETY AND SECURITY



24X7 CCTV
Surveillance



Self Owned GPS
Enabled School
Transport



Police Verified
House Keeping
and Transport
Staff



Secure Campus



ISO 9001
Registered Quality
Management
System





Come, be a proud Rabindranite



Rabindranath World School
Gurugram



“ The Highest Education is that which does not merely give us information but makes our life in harmony with all Existence. ”

– Rabindranath Tagore



Rabindranath World School
Gurugram

Write to us at info@rwsgurgaon.com

Web.: www.rwsgurgaon.com

W-10/3120, DLF City - Phase III, Gurugram Haryana - 122002

Tel.: +91-124-4050022/4060011/2356883

We are now on



@rabindranathworldschool



@rabindranathworldschool



@rabindranathworldschool



RABINDRANATH WORLD SCHOOL

W-Block DLF City Phase-III, Gurgaon

Contact: -0124-4060011,4050022 Mob-8826521304 Accounts-9899771117

FEE STRUCTURE SESSION "2024-25"

NEW ADMISSIONS

ONE TIME ADMISSION FEE

ADMISSION FEE HEAD'S	FOR CLASS P-PRIMARY	FOR CLASS I - V	FOR CLASS VI - IX	FOR CLASS XI
ADMISSION FEE	1000.00	1000.00	1000.00	1000.00
REGISTRATION FEE	10000.00	30000.00	30000.00	30000.00
CAUTION MONEY(REFUNDABLE)	10000.00	10000.00	10000.00	10000.00
TOTAL AMOUNT (ONE TIME ADM. FEE)	21000.00	41000.00	41000.00	41000.00

MONTHLY FEE DETAILS

FEE HEADS	PRE- PRIMARY	CLASS I - V	CLASS VI - VIII	CLASS IX -X	CLASS XI -XII
Tuition Fee	4000.00	5000.00	6000.00	6500.00	7000.00
Co-curricular Activities Fee (Cultural & Inter House programs & competitions etc.)	1200.00	1200.00	1200.00	1200.00	1200.00
Labs & Library Fee	800.00	800.00	800.00	800.00	800.00
Smart Class Fee	600.00	600.00	600.00	600.00	600.00
Computer Lab Fee	400.00	400.00	400.00	400.00	400.00
Software Gateway Charges	200.00	200.00	200.00	200.00	200.00
TOTAL MONTHLY FEE	7200.00	8200.00	9200.00	9700.00	10200.00

- ❖ Annual charges of Rs. 15000/- will be charged in the First Quarter.
- ❖ 1500/- for student ID-card, Yearbook, Diary & School Yearly Magazine will be Charged in First Quarter every year.

Salient Features:

1. The school is fully air-conditioned and having air-conditioned auditorium.
2. All school buses are air-conditioned.
3. All games facilities along with world class boxing ring & gym with dedicated coaches are available.
4. Transport is managed by Complete Educational Society. Experienced drivers/conductors/maids are available for the smooth pick up and drop of the students.
5. Medical room with first aid and qualified nursing assistant is on duty. We have medical facilities available at Narayana Hospital, V Block, DLF City-III, Gurgaon. If your child has any medical problem then kindly inform school in writing so that school can take care of the child during the school hours.

All the above facilities are sponsored by the Complete Educational Society.


Note:

1. Above mentioned charges do not include books & uniform.
2. Educational Excursions, tours & trips will be charged as per actuals.

- **Document's required**

1. Birth certificate attested copy
2. Address proof (Aadhar card/Rent agreement/Electricity Bill/voter card/ Govt. id-card)
3. Parents Aadhar card/pan card/address proof
4. Two photographs each mother/father/guardian & child.
5. Transfer Certificate (Certified)
6. Marksheet of previous class/ term.

Fee Instructions: -

- Parents are requested to issue DD in favour of **RABINDRANATH WORLD SCHOOL** and attach it to the school copy of the Invoice duly filled by the parents.
- Please write your Child's name, Admission Number, Class and Section on the back side of the DD for fee payment.
- Cheques will not be accepted.
- Fee can also be paid via DD, Paytm or online payment mode. For online payment of school fees, kindly log on to parent dashboard on the school website www.rwsgurgaon.com or download Cloud9 school app. 
- Fees will be charged on a quarterly basis, to be payable by the 10th of first month of every quarter, which is as follows. 1-10 April 1-10 July 1-10 October 1-10 January
- After the last payment date as mentioned in the invoice, fees will be accepted in cash, DD, online or Paytm only.
- After 10th of the first month of the quarter, late fee as applicable will be charged @ Rs 100/- per day (including Saturdays and Sundays) till 30th of that month.
- If fee is not deposited in the first month of every quarter, after 30th of that month, late fee of Rs. 500/- per day will be charged till the 15th of the second month, after which the name of the student will be struck-off the rolls and re-admission will be considered subject to availability of seats and at the discretion of the principal.
- Parents should not expect any reminder or re-issue of invoice from the school for payment of fee & dues.
- **Fee once paid will not be refunded.**
- There will be a yearly increment of 10% in the school fee.
- For any change in student data, parents are requested to submit their application along with required documents at the front office.

Parent Signature _____

Date _____